

Software Installation

First of all, you need to have installed the Matlab software. The associated software was tested on the Matlab versions 2006, 2007, 2008, and 2009. Matlab is not a freeware! The full installation instructions works on 32-bit Windows XP and Vista.

Second, you need to install some freeware (a toolbox and graphical software). The Matlab software does not provide a specific toolbox for economic modeling and serves only as the environment for the necessary matrix algebra. You will need to install the **IRIS** toolbox, developed by Jaromír Beneš, which is a Matlab-based package for advanced macroeconomic modeling. Although the current commercial version of the IRIS toolbox can be downloaded from www.iris-toolbox.com, after an agreement with Jaromír Beneš, we provide you with a package that contains an older, freeware version of the toolbox that is sufficient for our purposes.

Below is recommended installation of all the files. We strongly suggest following the instructions!

A. Download and save the following two IRIS files into the newly created directory: c:/Modeling/iris-install:

1. the zip file iris-toolbox.zip;
2. the Matlab file installiris.m.

B. Download and save the X12 Census package for seasonal adjustment into c:/Modeling/x12.

C. Download MiKTeX version 2.7, Ghostscript and Ghostgum (GSView) packages into c:/Modeling/FS. Note that for space reasons, I no longer host the full installation MiKTeX package.

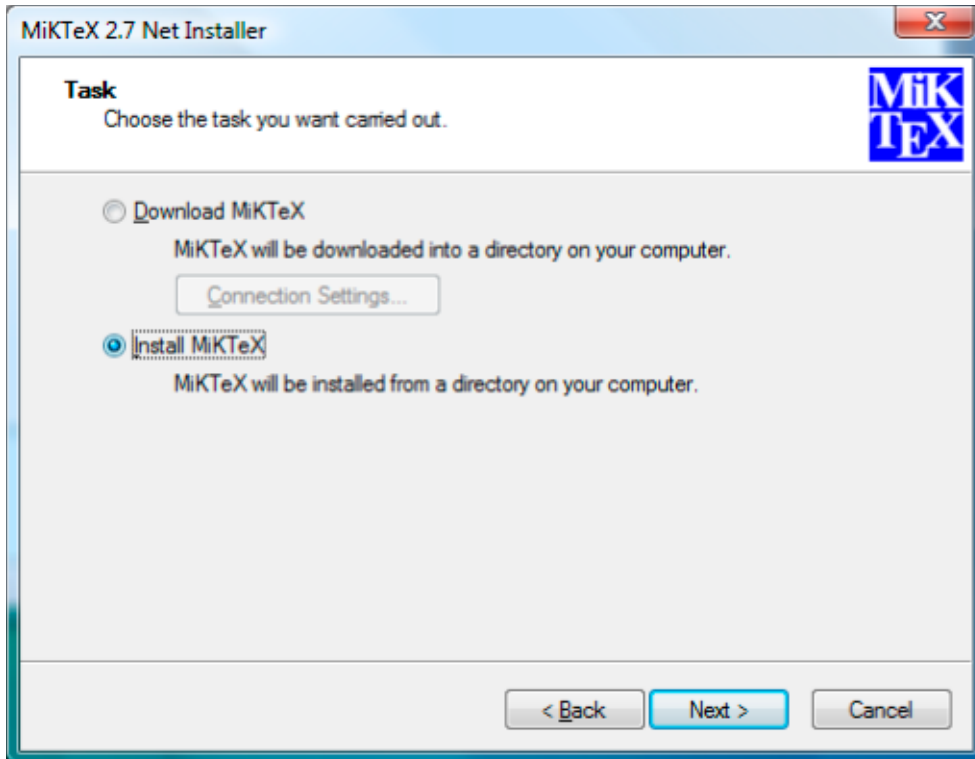
X12 Installation

We start with the X12 Census installation:

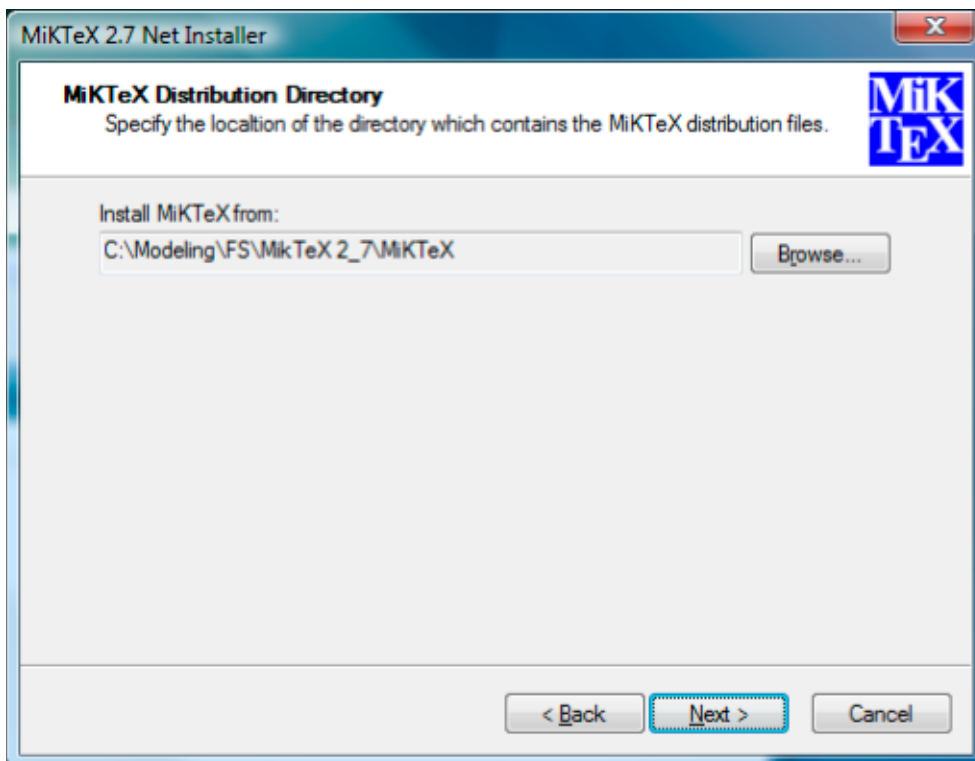
1. Go to c:/Modeling/x12;
2. Execute the downloaded **omegaxp.exe** file. X12 Census will be installed in the same folder in a few seconds.

MiKTeX Installation (if you already have MiKTeX installed, do not install it again)

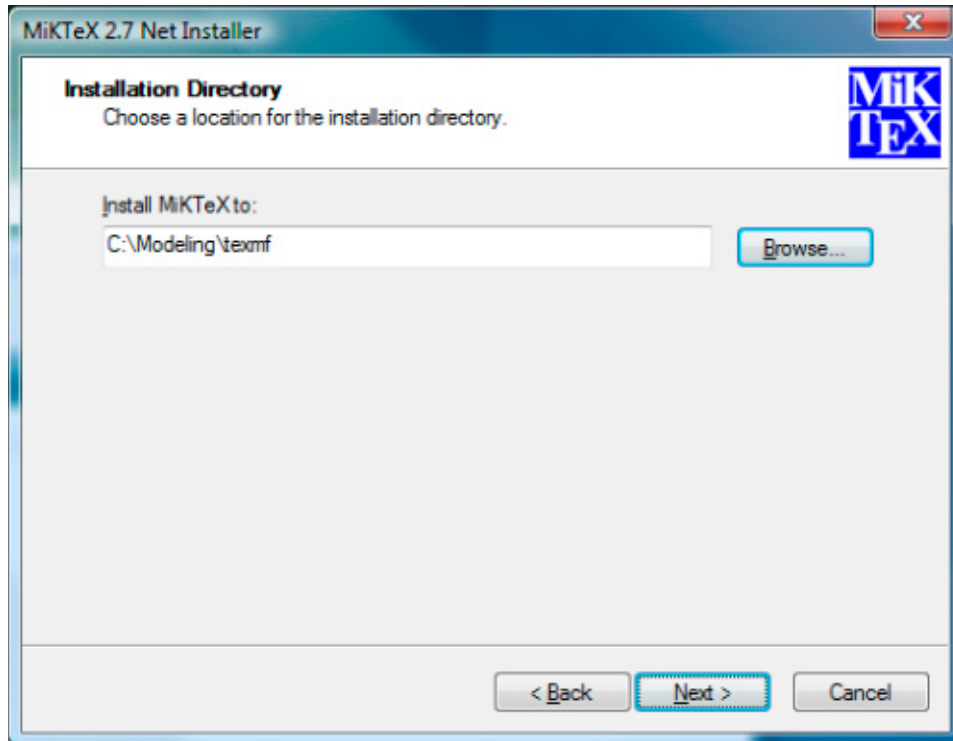
1. Go to the c:/Modeling/FS;
2. Execute the downloaded file **setup-2.7.****.exe** file.



3. Warning! The installation program first asks about the location of installation files, i.e. where to install MiKTeX **from**, not where MiKTeX is to be installed. This question comes next.

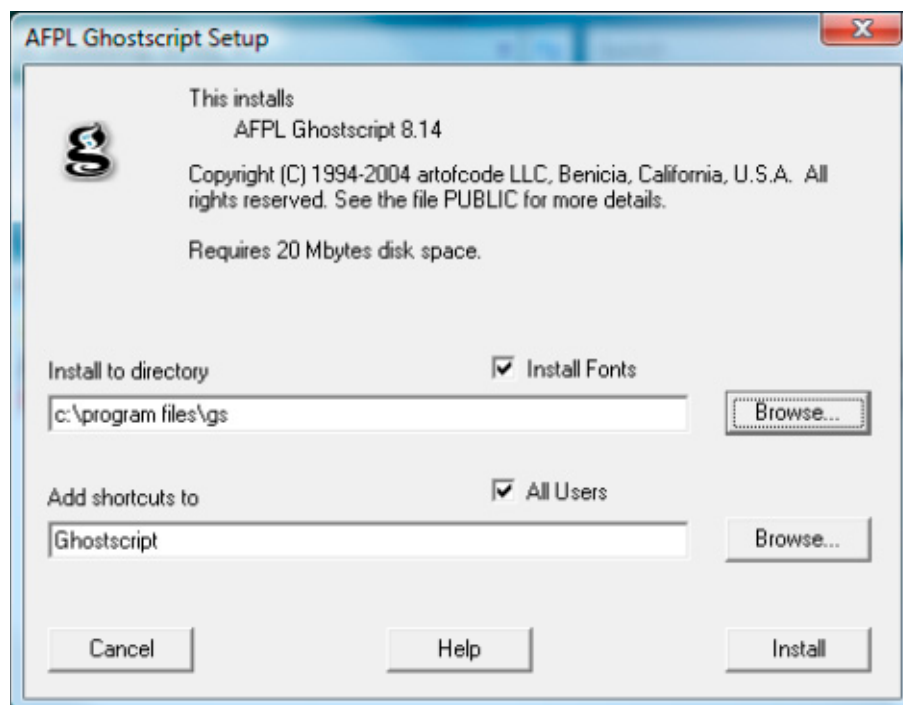


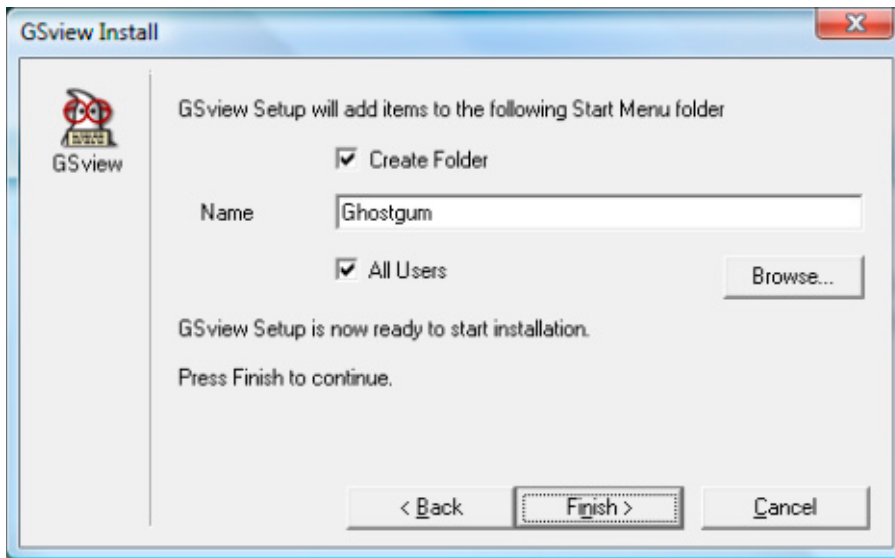
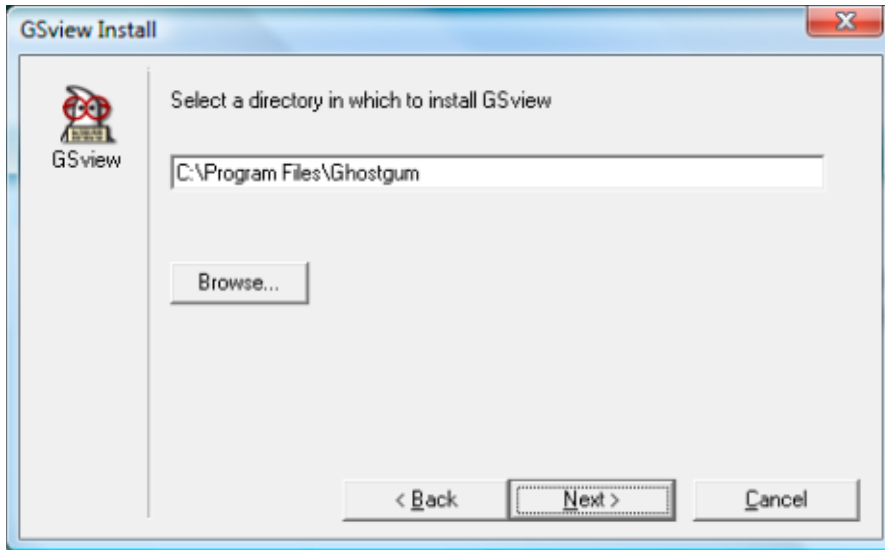
- When asked for the installation folder, do not install MiKTeX into the automatically offered Program Files directory, but change the folder via browse option to c:/Modeling/texmf and install (this installation may take up to 30 minutes, depending on your computer).



Ghostscript and Ghostgum Installation (if you already have these files installed, do not install them again)

- Go to the c:/Modeling/FS;
- Execute **gs814w32.exe** and **gsv46w32.exe** files. Both programs can be installed into the Program Files directory, and make sure the option All Users is selected.





IRIS Installation

1. For this we start Matlab first.
2. Set the 'current directory' (on the top of the screen) for the directory where the IRIS installation files were saved. In the default installation the address is c:/Modeling/iris-install;
3. Write the command **installiris** in the Matlab command window, [enter].
4. You will be asked for the desired IRIS Toolbox folder. Type c:/Modeling/iris-toolbox, [enter]. Note that Matlab is case sensitive and you must write your folder names exactly.
5. You will be asked for the path to the LaTeX (MiKTeX) program that you installed in the previous step. Type c:/Modeling/texmf/miktex/bin, [enter]. **If you already have MikTeX installed, look for the location of the bin subdirectory.** Under most installations it can be found at c:/texmf/miktex/bin, so type this location instead.
6. You will be asked for the path to the X12. Type c:/Modeling/x12, [enter].

```

>> installiris

Enter the desired IRIS Toolbox folder, e.g. C:/IRIS-TOOLBOX: c:/Modeling/iris-toolbox

IRIS Toolbox Version 4.20070321 will be installed in C:/MODELING/IRIS-TOOLBOX.

Unzipping. Please wait.

If you have LaTeX installed on your computer,
enter the folder where latex.exe and other executables are found, e.g. C:/TEXMF/MIKTEX/BIN
(otherwise leave blank): c:/Modeling/texmf/miktex/bin

If you have X12 installed on your computer,
enter the folder where x12a.exe or x12axp.exe is found, e.g. C:/X12
(otherwise leave blank): c:/Modeling/x12

```

- Now the IRIS Toolbox has been installed and the paths to MikTEX and X12 have been set.

Starting the IRIS Toolbox

Anytime you open Matlab for a modeling exercise you must path the IRIS Toolbox to the Matlab. This is done via Matlab's command window typing: **addpath c:/Modeling/iris-toolbox; irisstartup**, [enter]. You receive the message 'The IRIS Toolbox Version 4. 20061115 ready'. [Note that Matlab will remember the command and next time you type 'a' and push arrow up, Matlab will bring up the addpath... command.] Do not path the IRIS Toolbox via Seth Path option in the Matlab's File menu.

Did you get a "missing file" message when running the modeling program?

Occasionally two MikTex files do not get installed and Matlab installs them on the fly first time you try to run one of the Matlab modeling commands. Say **yes** to the installation request.

Just in case, here are instructions to install these two files manually (the files can be downloaded from here: [rotating.sty](#) and [fancyhrd.sty](#)). Save the files into c:\modeling\texmf\tex\latex\other and run the program c:\modeling\texmf\miktex\bin\mo.exe. When the new window is opened, select **Refresh FNDB**.